

Switching Software Client for Windows/Mac included!

2-port Slim Palmtop USB KVM Switch for Office and SOHO application, Push button, keyboard hotkeys and Switching Software client for switching operation

USB-SP02 Slim Palmtop USB KVM Switch

The USB-SP02 Slim Palmtop USB KVM Switch is a 2-port compact KVM Switch for SOHO and office application. Its USB support on the console side allows you to use USB keyboard and mouse. It comes with 2 sets of detachable USB KVM combo cables for SOHO and office desktop application. And it allows you to access, control, boot and reboot two USB-enabled computers with only one USB keyboard, mouse and monitor, using the Switching Software Client installed on your PCs.



Switching Software Support for both PC and Mac

The USB-SP02 also provides a Switching Software that shows you the current active PC and allows you to select PC as well as configure keyboard hotkeys. It appears as an icon on the system tray of your Window/Mac desktop, and will change its number icon upon switching to show the active PC port. Using this small client software, it will give KVM users utmost convenience and control.

USB interface compatibility for multi-platform support

The USB interface technology offers multi-platform support for PC, Macintosh G3/G4 and iMAC. The KVM Switching Software client supports Windows/Mac platforms. However, the port switching could also be done by a universal port switching hotkey for PC platform.

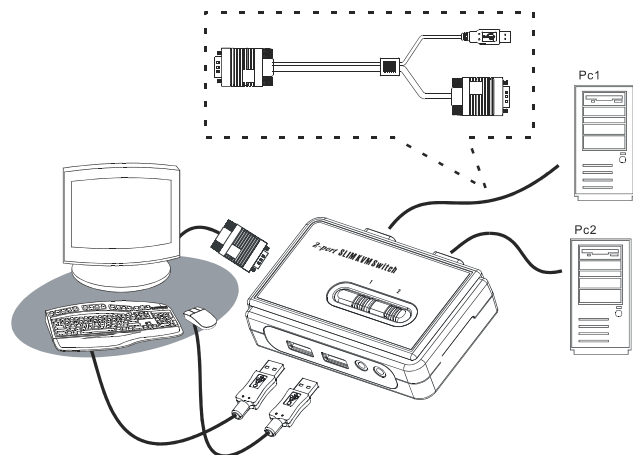
Zero Cabling Hassles for KVM users

This KVM Switch saves you cabling troubles with its 2 x 1.5 M detachable KVM combo cables. In fact, you have zero cabling troubles since you don't have to worry about finding suitable cables to fit—They comes within the box package!



Features

- 2-port Slim Palmtop KVM Switch with 2 x detachable USB KVM combo cables
- USB console support for USB keyboard and mouse
- USB 1.1 Specification compliant
- Multi-platform support for PCs and Macintosh G3/G4 MAC, iMAC
- Hot-plugging PCs for maintenance without powering down the KVM Switch or PCs
- Switching Software client for easy switching on Windows and Mac
- User definable hotkeys
- Additional universal port switching hotkey – ScrollLock + ScrollLock – for PC platform.
- Channel selection by push button, keyboard hotkeys and Switching Software Client (Windows/Mac)
- LED indicators for easy status monitoring
- High VGA resolution 2048 x 1536
- USB interface power



Specifications

Model No.	USB-SP02
PC Connections	2
Console Connections	1
Cables	2 x detachable USB KVM Combo Cable
PC Port Connectors	2 x HDB 15-pin female
Console Port Connectors	2 x USB Type A (Keyboard & Mouse) 1x HDB 15-pin female
PC selection	Push button Hotkeys Switching Software (Windows/Mac)
PC port LED	2
VGA Resolution	2048 x 1536
Power Type	USB interface power
Size	Slim Palmtop
Housing	Plastic
Dimension (L x W x H)	96 × 61 × 24 mm
Safety / Emission	FCC, CE